

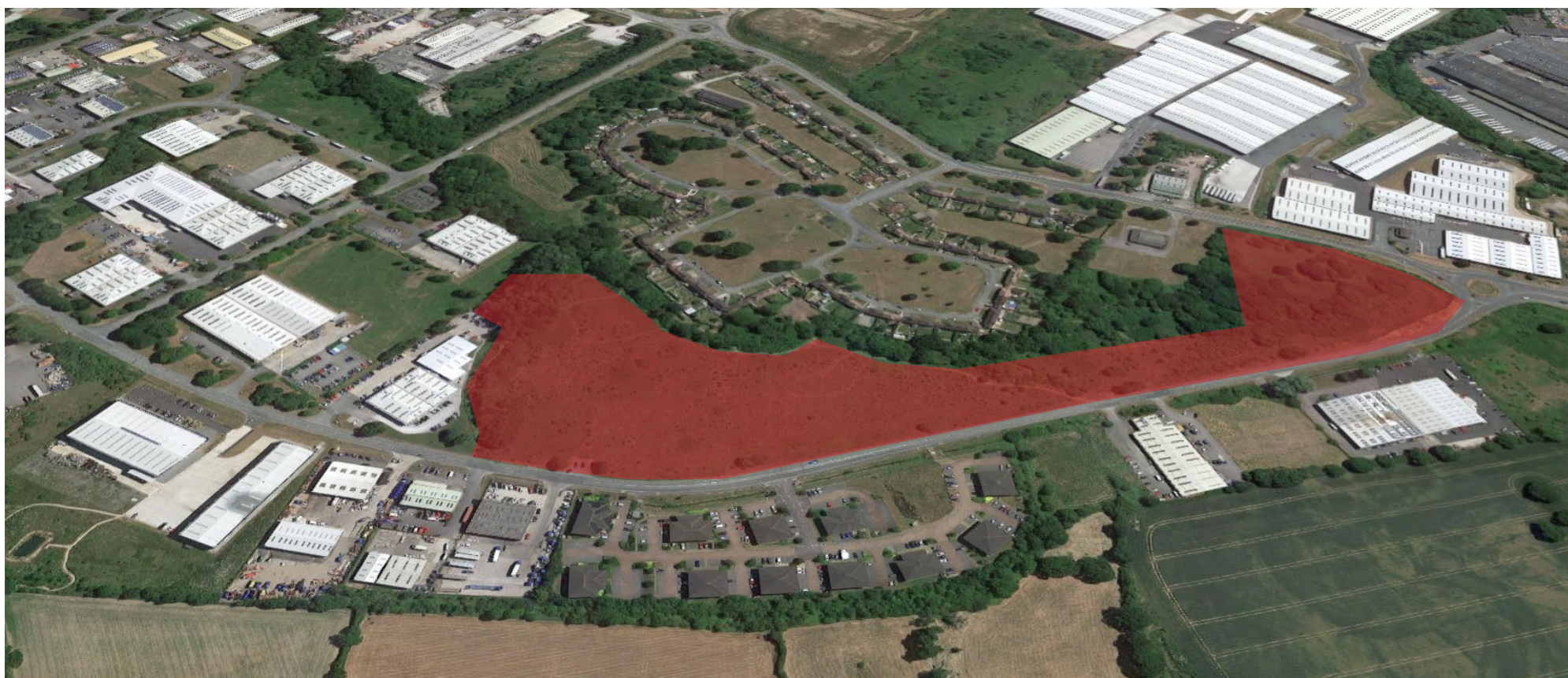


Site

Existing Aerial Views



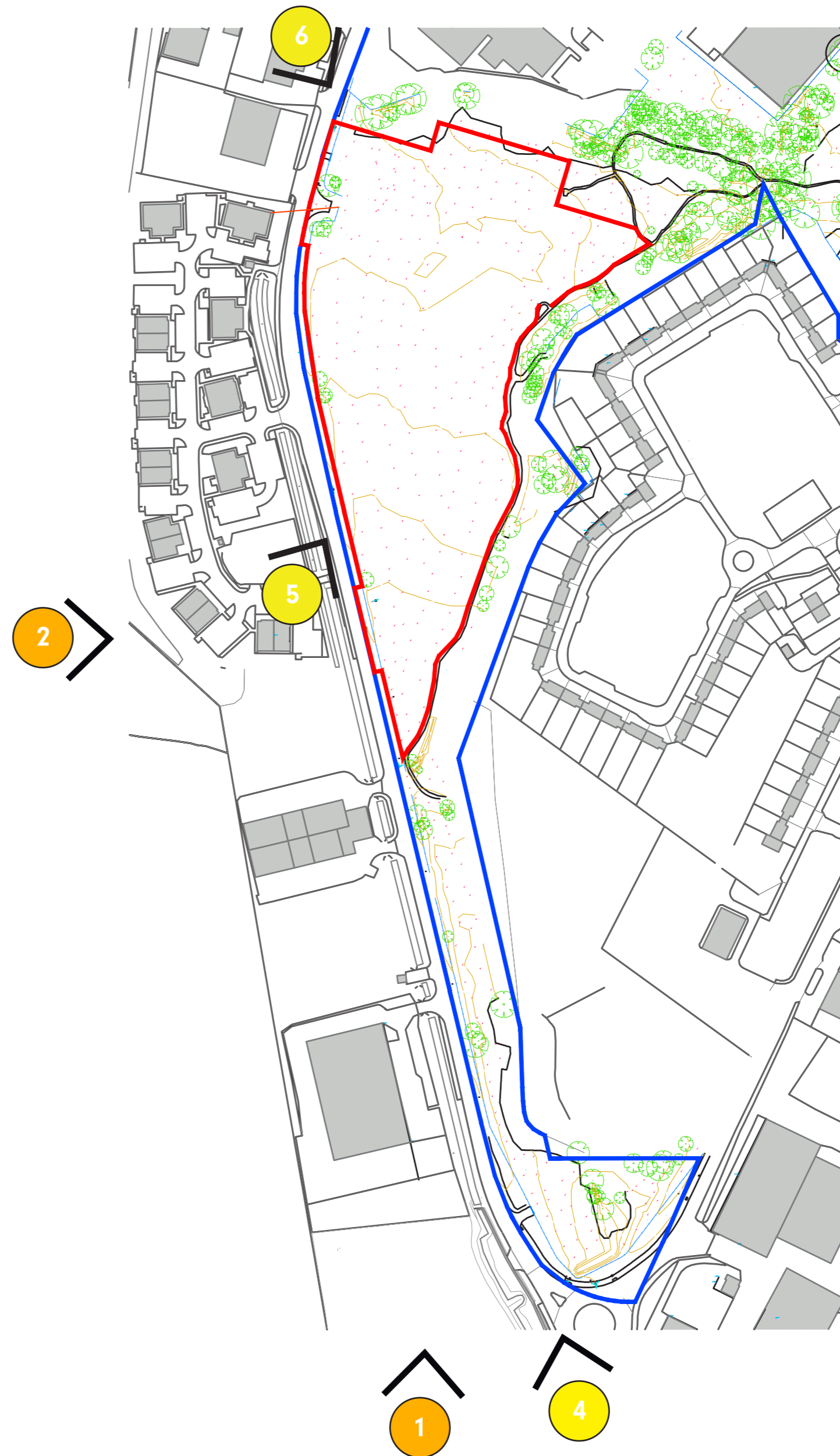
View 01



View 02



View 03



The proposal site measures 7.5 acres (3.01 hectares). The site is currently unoccupied and is bordered on three sides by other industrial developments with housing to the South-East.

The site is bordered by residential developments and industrial units.



View 05

Existing Site Views



View 04



View 06



WREXHAM